



MOBILE BLOCKS

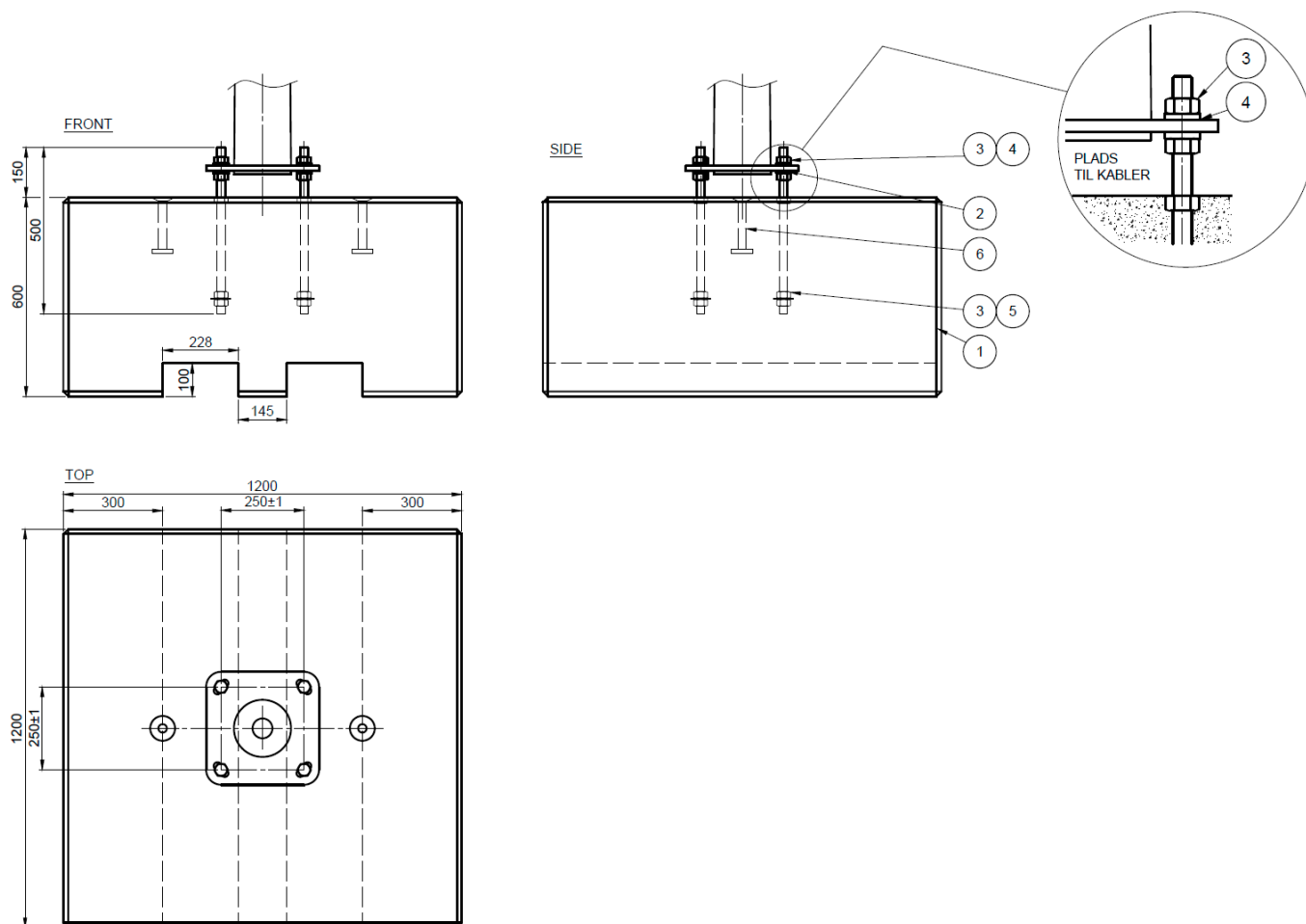


Mobile blocks from DAV NORDIC are developed as a flexible and reliable solution for construction sites where the need for temporary or semi-permanent masts may change as the project progresses. The blocks are designed with a strong focus on functionality and mobility and are equipped with integrated forklift pockets in the base, making them easy to handle and move around the site as required.

The mobile block eliminates the need for installation below ground level and can therefore be put into use quickly without extensive excavation work. This makes the solution particularly suitable for temporary installations where both time and flexibility are crucial factors.

DAV NORDIC's mobile blocks can be used for masts with heights ranging from 6.0 to 12.0 metres and are available in several variants adapted to different load and application requirements. The solid construction ensures high stability, while the mobile design provides maximum flexibility on the construction site.

FOUNDATIONS



Foundation

Item no.	Description	Weight (kg)	Lenght (mm)	Width (mm)	Hight (mm)	Max LPH (pole h) (m)
76257	Mobile blocks, type 6	1574	800	1200	700	6,0
76258	Mobile blocks, type 9	2021	1200	1200	600	9,0
76259	Mobile blocks, type 12	3572	1300	1300	900	12,0

DAV NORDIC A/S
Tietgensvej 12
DK-8600 Silkeborg

DAV NORDIC A/S
Pilebækvej 5
DK-4632 Bjæverskov

DAV NORDIC A/S
+45 86822900
info@davnordic.dk

