



## PREFABRICATED FOUNDATIONS

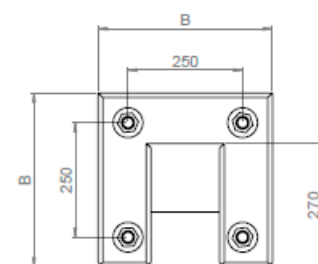
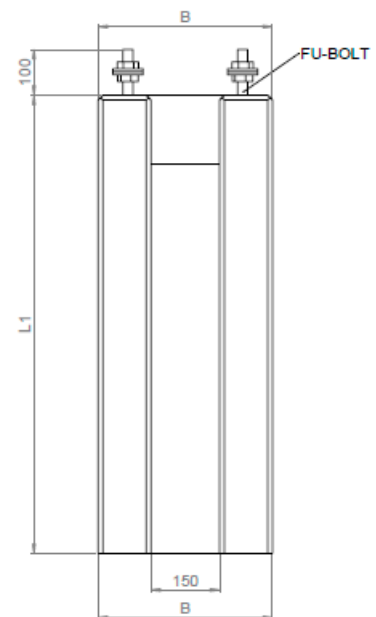


### Description / Materials

Prefabricated concrete foundations with 4 cast-in bolts for tubular poles with base flange.

### Type 1 - Prefabricated concrete foundations For tubular poles with base flange

Item no.	L1 (mm)	A1 (mm)	A2 (mm)	B (mm)	Fu-bolt (mm)	Weight (kg)
76245	750	250	250	380	M20	186
76210	1000	250	250	380	M20	337
76215	1300	250	250	380	M20	425
76220	1600	250	250	380	M20	530
76235	1600	250	250	485	M20	925





## PREFABRICATED FOUNDATIONS

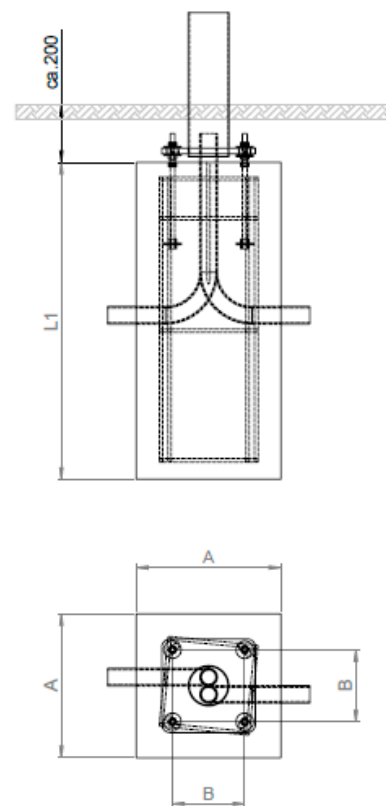


### Description / Materials

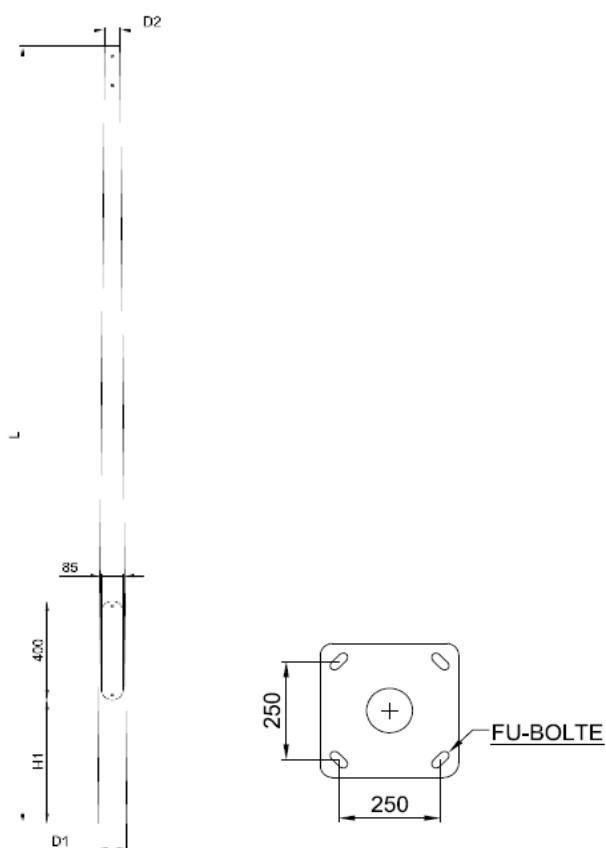
Prefabricated concrete foundations with 4 cast-in bolts for tubular poles with base flange.

### Type 2 - Prefabricated concrete foundations For tubular poles with base flange

Item no.	L1 (mm)	A1 (mm)	A2 (mm)	B (mm)	Fu-bolt (mm)	Weight (kg)
76245	750	250	250	380	M20	186
76215	1300	250	250	380	M20	425
76220	1600	250	250	380	M20	530
76235	1600	250	250	485	M20	925

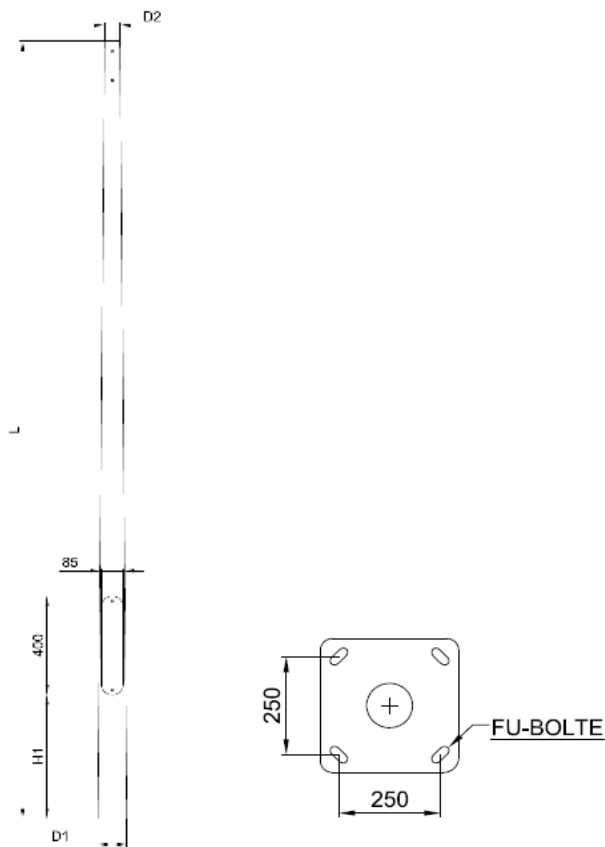


# PREFABRICATED FOUNDATIONS



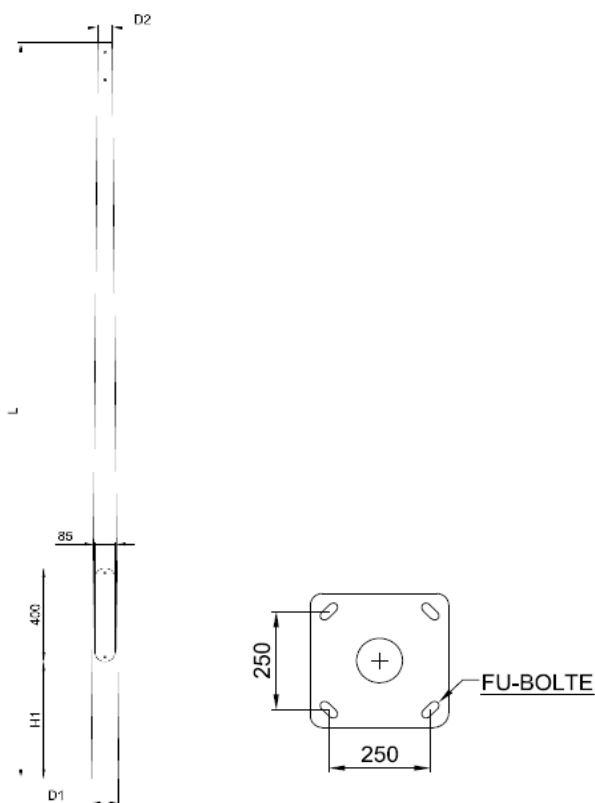
Item no.	L (total pole length) (mm)	H1 (distance to door) (mm)	D1 (base Ø) (mm)	D2 (top Ø) (mm)	Door width	FU-BOLT	Max wind load m <sup>2</sup> /luminaire	Weight (kg)	Taper	Pref. foundation
-	3000	500	Ø96	Ø60	70	M20	0,33	-	12	76245
-	3500	500	Ø102	Ø60	75	M20	0,25	-	12	76245
-	4000	500	Ø116	Ø60	75	M20	0,34	-	12	76245
-	5000	500	Ø120	Ø60	75	M20	0,44	47	12	76245
73588	6000	500	Ø132	Ø60	75	M20	0,31	53	10	76210
73594	7000	1000	Ø130	Ø60	75	M20	0,25	69	10	76215
73606	8000	1000	Ø140	Ø60	75	M20	0,25	79	10	76215
73608	9000	1000	Ø150	Ø60	75	M20	0,23	123	10	76220
73624	10000	1000	Ø180	Ø60	75	M20	0,43	134	12	76220
73627	12000	12000	Ø204	Ø60	75	M20	0,40	-	12	76235

# PREFABRICATED FOUNDATIONS



Item no.	L (total pole length) (mm)	H1 (distance to door) (mm)	D1 (base Ø) (mm)	D2 (top Ø) (mm)	Door width	FU-BOLT	Max wind load m <sup>2</sup> /luminaire	Weight (kg)	Taper	Pref. foundation
-	3000	500	Ø96	Ø60	70	M20	0,33	-	12	76245
-	3500	500	Ø102	Ø60	75	M20	0,25	-	12	76245
-	4000	500	Ø116	Ø60	75	M20	0,34	-	12	76245
-	5000	500	Ø120	Ø60	75	M20	0,44	47	12	76245
73588	6000	500	Ø132	Ø60	75	M20	0,31	53	10	76210
73594	7000	1000	Ø130	Ø60	75	M20	0,25	69	10	76215
73606	8000	1000	Ø140	Ø60	75	M20	0,25	79	10	76215
73608	9000	1000	Ø150	Ø60	75	M20	0,23	123	10	76220
73624	10000	1000	Ø180	Ø60	75	M20	0,43	134	12	76220
73627	12000	12000	Ø204	Ø60	75	M20	0,40	-	12	76235

# PREFABRICATED FOUNDATIONS



Item no.	L (total pole length) (mm)	H1 (distance to door) (mm)	D1 (base Ø) (mm)	D2 (top Ø) (mm)	Door width	FU-BOLT	Max wind load m <sup>2</sup> /luminaire	Weight (kg)	Taper	Pref. foundation
-	3000	500	Ø96	Ø60	70	M20	0,33	-	12	76245
-	3500	500	Ø102	Ø60	75	M20	0,25	-	12	76245
-	4000	500	Ø116	Ø60	75	M20	0,34	-	12	76245
-	5000	500	Ø120	Ø60	75	M20	0,44	47	12	76245
73589	6000	500	Ø132	Ø60	75	M20	0,31	53	10	76210
73591	7000	1000	Ø130	Ø60	75	M20	0,25	69	10	76215
73604	8000	1000	Ø140	Ø60	75	M20	0,25	79	10	76215
73609	9000	1000	Ø150	Ø60	75	M20	0,23	123	10	76220
73622	10000	1000	Ø200	Ø60	75	M20	0,43	134	12	76220
73626	12000	12000	Ø204	Ø60	75	M20	0,40	-	12	76235

DAV NORDIC A/S  
Tietgensvej 12  
DK-8600 Silkeborg

DAV NORDIC A/S  
Pilebækvej 5  
DK-4632 Bjæverskov

DAV NORDIC A/S  
+45 86822900  
info@davnordic.dk

