



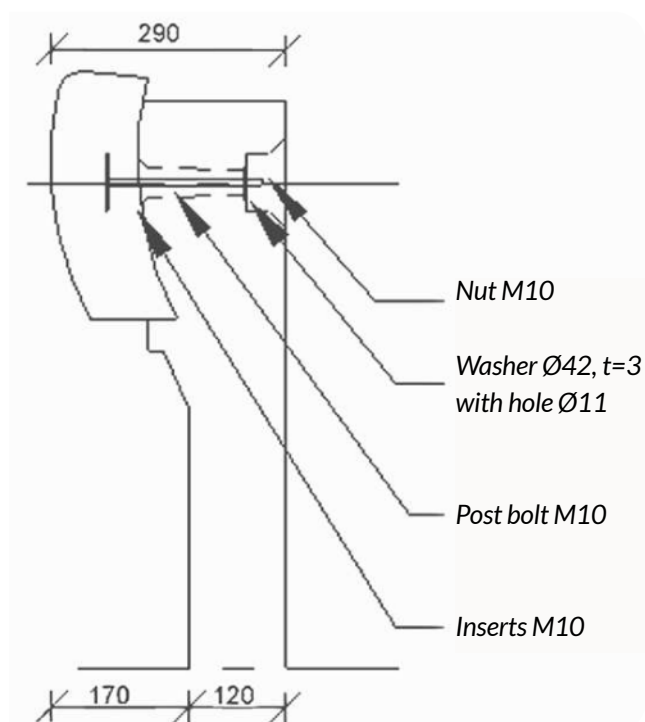
CONCRETE CRASH BARRIERS FROM DAV NORDIC



Type BDK 3.1

Concrete guardrail type BDK 3.1 is used as a reinforced guardrail at bridge connections and as protection around fixed objects.

It is used for objects that cannot meet the European standard for road equipment passivity (EN 12767), or for objects that pose a greater risk of overturning or abruptly stopping the vehicle.



DAV NORDIC A/S
Tietgensvej 12
DK-8600 Silkeborg

DAV NORDIC A/S
Pilebækvej 5
DK-4632 Bjæverskov

DAV NORDIC A/S
+45 86822900
info@davnordic.dk

DAV